



BOYDELL COURT

ST JOHNS WOOD, NW8

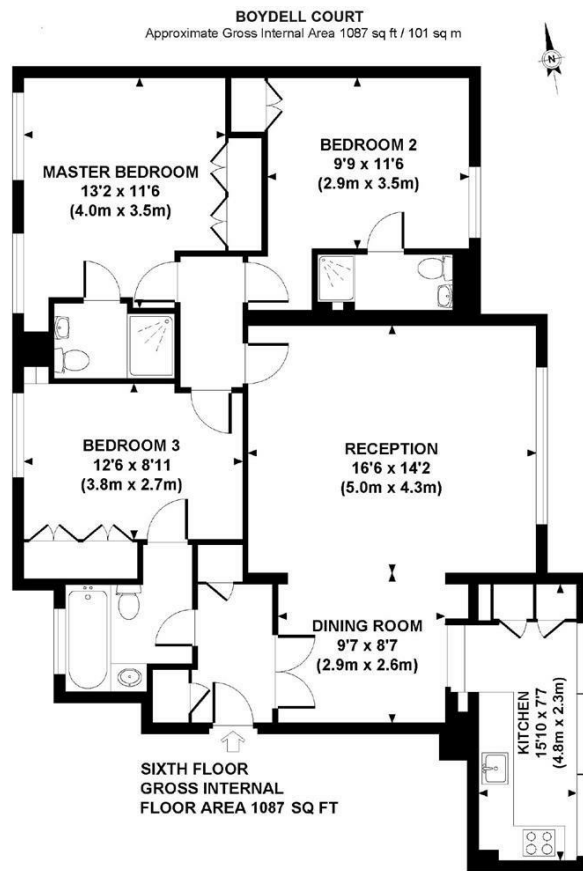
£1,300 PER WEEK

An immaculate, beautifully presented newly refurbished apartment of a popular purpose built development in sought after St Johns Wood.

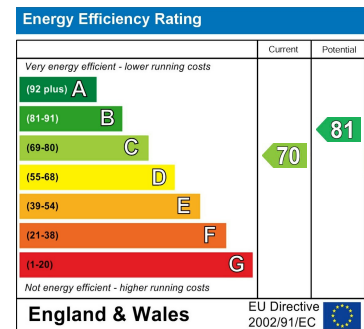
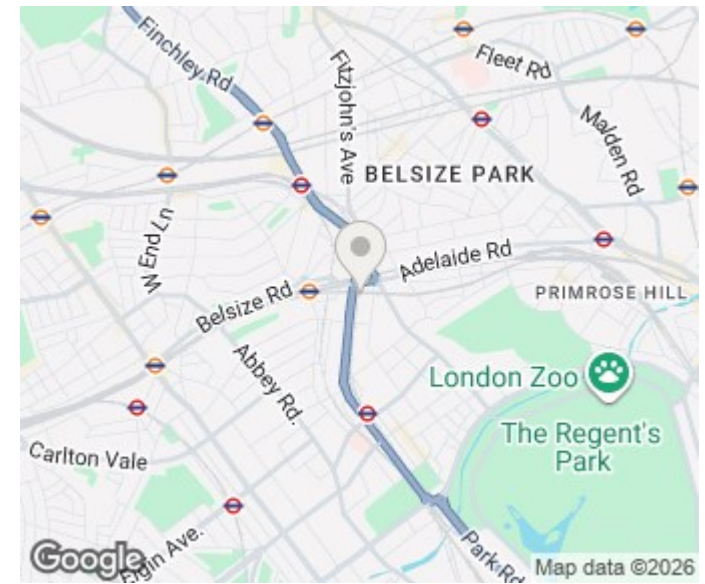
Boasting bespoke decor and high quality furnishings throughout, including a grand reception and dining room with attractive hard wood flooring, contemporary German designed fully fitted kitchen featuring integrated appliances and ample storage,

Three double bedrooms with built in storage all benefitting from beautifully designed en-suites bathrooms with multi-jet showers. The Development further boasts an on-site porter, double glazed windows, air-condition, lift access and secure off street parking.

PMP | INTERNATIONAL



Although every attempt has been made to ensure accuracy, all measurements are approximate.
The floor plan is for illustrative purposes only and not to scale. Measured in accordance to RICS standards.
DE-PHOTOGRAPHY.NET



Agents Note: Whilst every care has been taken to prepare these particulars, they are for guidance purposes only. All measurements are approximate and are for general guidance purposes only and whilst every care has been taken to ensure their accuracy, they should not be relied upon and potential buyers/tenants are advised to recheck the measurements

London
PMP International
94 Belsize Lane
Belsize Park
London
NW3 5BE

020 7701 2878
info@pmpi.co.uk
www.pmpi.co.uk

PMP | INTERNATIONAL